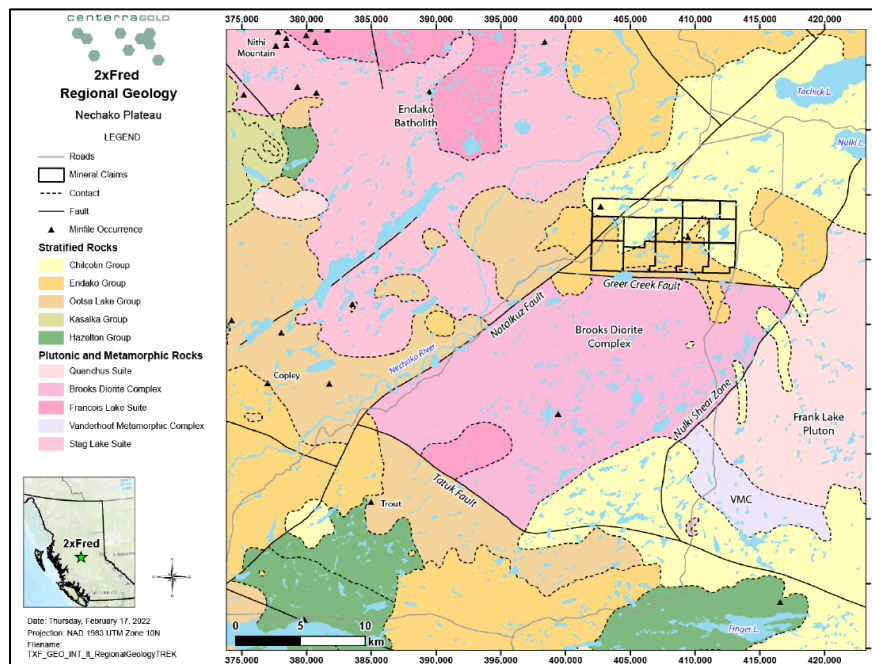


TWO TIMES FRED PROJECT

Emerging Epithermal Gold System with District-Scale Footprint in Central BC

EXECUTIVE SUMMARY

Two Times Fred is an emerging epithermal gold-silver project located 30 km southwest of Vanderhoof in central British Columbia. The project hosts a large-scale, low- to intermediate-sulfidation system preserved beneath basalt cover, with multiple km-scale vein corridors, widespread alteration, and strong gold-silver values in drilling. Over \$4.35M in modern exploration—including over 10,900 m of drilling and 890 km of geophysics—has defined multiple high-priority targets across a district-scale land position. With proximity to highways, power infrastructure, and supportive resource-focused communities and First Nations, Two Times Fred is fully drill-ready and offers significant discovery upside in a proven but underexplored belt.



EXPLORATION POTENTIAL & INVESTMENT HIGHLIGHTS

- **District-Scale Potential:** Multiple vein corridors, broad alteration zones, and significant drill intercepts indicate a large, intact epithermal gold system [from scintier level](#)
- **Proven Mineralization:** Recent drilling returned the best intercepts to date — including 20.6 m @ 1.36 g/t Au and 17.2 g/t Ag
- **Heavily De-risked:** Over \$4.35M in exploration by Centerra, including 10,900+ meters of drilling and 890+ line-km of modern geophysics
- **Defined Follow-Up Targets:** Clearly outlined vein corridors with km-scale strike lengths and high-grade zones

~~—All Veins Remain Open in Every Direction: Most drilling on any given vein is only 8 holes.~~

•

~~• All Veins Remain Open in Every Direction: Most drilling on any given vein is only 8 holes.~~

- **Strategic Location:** Near Highway 16, 500 kV transmission line, and key logistics corridors
- **Strong Regional Support:** Within a resource-driven area with skilled labor, established infrastructure, and supportive First Nations

INFRASTRUCTURE & COMMUNITY SUPPORT

- 30 km southwest of Vanderhoof, BC with all-season forestry road access
- Proximity to Highway 16, rail, and power infrastructure including 500 kV transmission lines
- Established regional workforce and exploration services
- Located in an area with a history of successful engagement with local First Nations and resource-focused communities

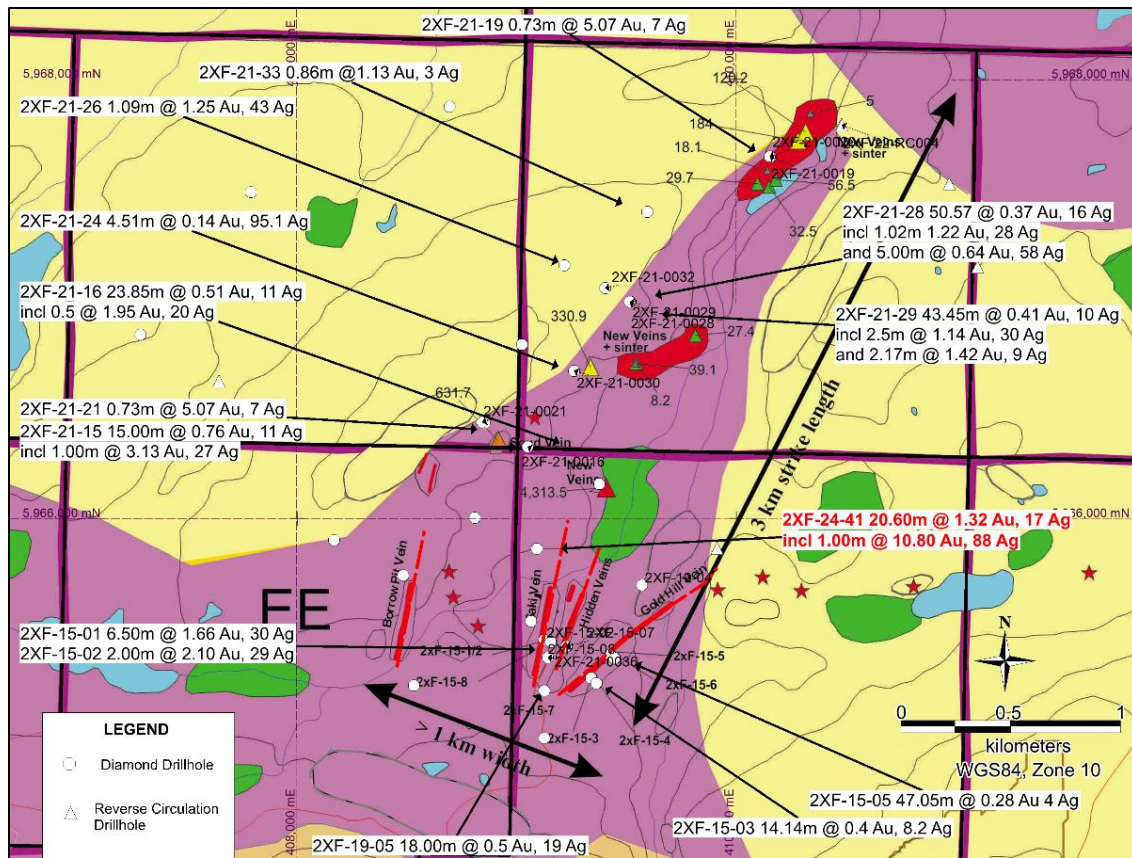
GEOLOGICAL CONTEXT & TARGETING

- Hosted in Eocene Endako Group volcanic rocks, overlain by Chilcotin basalt
- Low- to intermediate-sulfidation epithermal gold-silver system, intact and erosion-protected
- Two main vein orientations: NNE (Saki) and NE (Gold Hill, Borrow Pit, Shinju)
- Shallow sinter-like textures, extensive veining, and clay-sericite-pyrite alteration
- Favorable setting above predicted unconformity and potential boiling horizon

KEY VEIN CORRIDORS & INTERCEPTS

- **Saki Vein (NNE):**
 - Interpreted 2,000 m strike with best intercepts:
 - 20.6 m @ 1.36 g/t Au, 17.2 g/t Ag
 - 14.95 m @ 1.28 g/t Au, 14.6 g/t Ag
 - Including 1.0 m @ 10.8 g/t Au, 88.5 g/t Ag
- **Gold Hill Vein (NE):**
 - Strike traced for ~1,000 m with consistent veining

- **Hole 2xF-15-03:** 42.2 m @ 0.31 g/t Au
- **Hole 2xF-15-04:** 63.15 m @ 0.17 g/t Au
- **Hole 2xF-15-05:** 28.1 m @ 0.35 g/t Au
- **Hole 2xF-19-04:** 54.8 m @ 0.161 g/t Au
- **Hole 2xF-19-05:** 87.5 m @ 0.321 g/t Au
- True widths ~20–40 m
- **Borrow Pit (NE):**
 - 47.05 m @ 0.287 g/t Au incl. 0.83 m @ 2.39 g/t Au
- **Shinju Vein (NE):**
 - Up to 1,500 m strike
 - Best intercepts:
 - 5.89 m @ 0.43 g/t Au
 - 8.31 m @ 0.31 g/t Au
 - 7.07 m @ 0.28 g/t Au, 62.9 g/t Ag
- **Hidden Hand & Shochu Veins:** [Note to add to map legend showing what triangles and stars mean](#)
 - Additional structures with expansion potential



Geological Map showing vein occurrences and selected drilling highlights

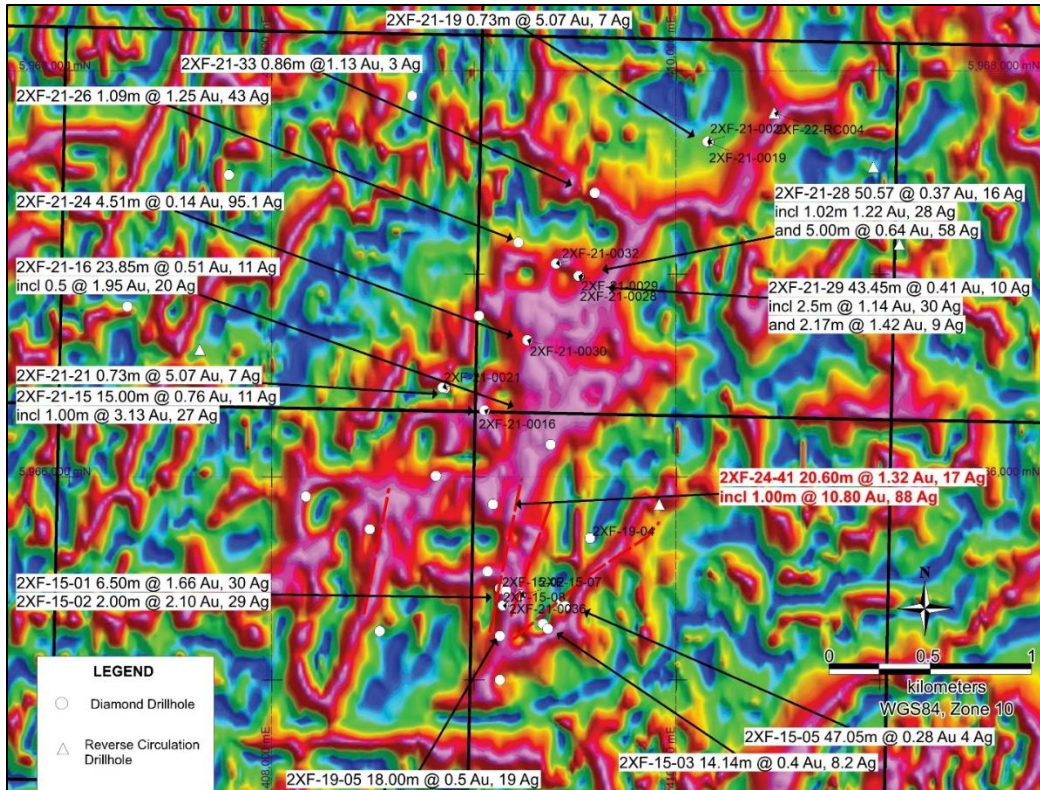
EXPLORATION HISTORY & TECHNICAL DATASET

- ~\$4.35M in exploration (Centerra 2021–22 + Kootenay Silver 2011–19)
- **Drilling:**
 - 8,239 m (Centerra), 1,716 m (Kootenay), 965 m (RC)
- **Geophysics:**
 - IP, CSAMT, MT, airborne & ground mag, 890+ km total
- **Remote Sensing:** LiDAR, orthos, till mapping, drift thickness
- Strong structural and 3D modeling dataset — fully drill-ready

OWNERSHIP & CONTACT

Kootenay Resources Inc.
 595 Howe Street, Suite 1125
 Vancouver, BC, Canada V6C 2T5
 Dale Brittliffe, P. Geo +1 (778) 869-0667

For drill logs, maps, or partnership inquiries, contact us today.



Tilt Derivative Magnetics image showing good correlation of veins with mag high features, over broadly circular anomaly roughly 4km in diameter.